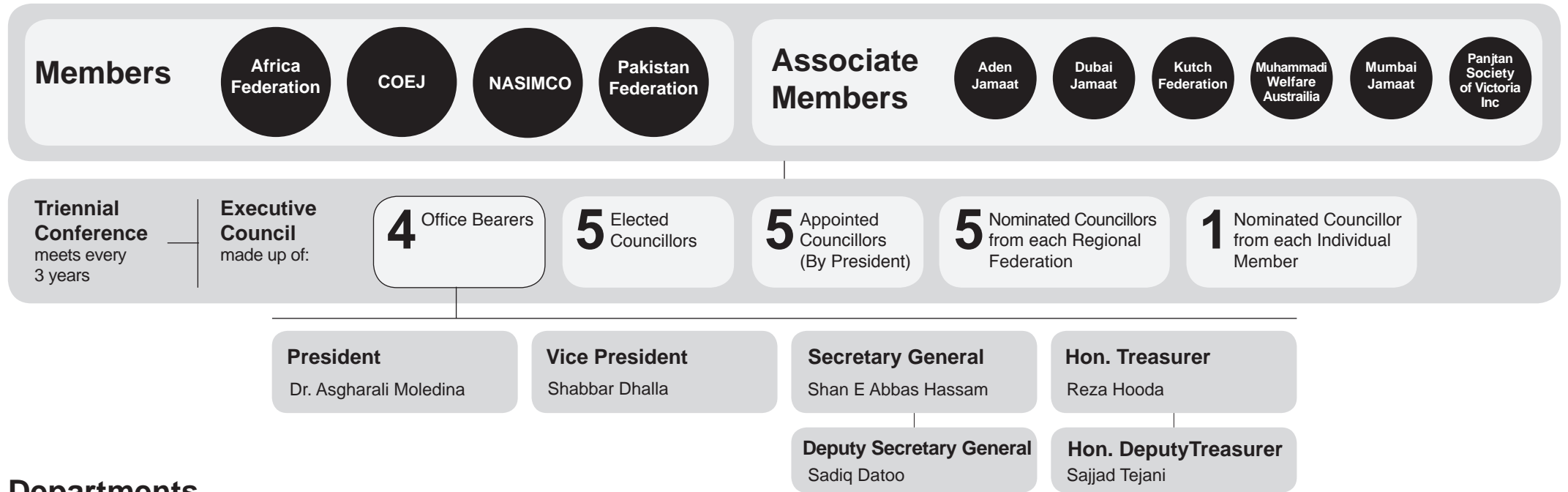


Organisation Chart - The World Federation of KSIMC



Departments

<p>Executive Officer Iqbal Panju</p> <p>E: secretariat@world-federation.org</p> <p>Manage and delivers all matters that are not dealt with by a specific department and providing support to the Office Bearers & the Organisation as a whole. Assist the Secretary General in the deliverance of the constitutional requirements of the Organisation</p>	<p>Consultant Head of Operations Sabira Kanji</p> <p>E: sabirak@world-federation.org</p> <p>Leadership, operational direction and oversight to the Secretary General, responsible for the management of all the Employees & Volunteers including policies, procedures, processes, charity compliance and legal obligations of the charity. Providing support to the Office Bearers in the delivery of the approved Action Plan.</p>	<p>Offices:</p> <p>(Head Office) Wood Lane, Stanmore Middlesex, HA7 4LQ, UK T: +44(0) 20 8954 9881 F: +44(0)20 8954 9034 E: secretariat@world-federation.org</p> <p>Mumbai</p> <p>Qum</p>
<p>Education</p> <p>Empowering individuals & communities with knowledge and skills, providing training & guidance on educational matters and supporting career development.</p> <p>E: education@world-federation.org Assistant Secretary General Mahmood Dhala</p>	<p>Family Affairs</p> <p>Building capacity within the community by creating successful individuals and families willing to prepare for the reappearance of the 12th Imam (as).</p> <p>E: familyaffairs@world-federation.org Assistant Secretary General Not appointed Yet</p>	<p>Health</p> <p>Offering sustainable health solutions for the community, supporting health needs, and serving people in public areas where needs are high and relevant resources are low.</p> <p>E: health@world-federation.org Assistant Secretary General Dr. Munir M. Datoo</p>
<p>International Relief & Development</p> <p>Focusing on the welfare of the community & humanity by providing sustainable support to those who lack basic provisions in regions of deprivation, war & natural disasters.</p> <p>E: relief@world-federation.org Assistant Secretary General Anisa Kanji</p>	<p>Islamic Education</p> <p>Promoting Islamic education and spreading the true message of Islam to the community and wider society through resources that nurture a strong Islamic identity based on the teachings of the AhlulBayt (as).</p> <p>E: islamiceducation@world-federation.org Assistant Secretary General Sayed Aliraza Naqvi</p>	<p>Marketing & Communication</p> <p>Facilitating external and internal communication by informing the community, sharing community successes and best practices.</p> <p>E: communications@world-federation.org Assistant Secretary General Not appointed Yet</p>
<p>Zainabiyya Child Sponsorship Scheme</p> <p>Assisting deprived children to receive education so that they can improve their quality of life through self sufficiency for their families and communities.</p> <p>E: zcss@world-federation.org Assistant Secretary General Masum Somji</p>		